

MaineHealth

# Healthy Community Coalition Community Health Workers

**Substance Use Disorder Navigation**

4/23/24

Presenters:

Alison Prior, CHW, Behavioral Navigator

Karen Garland-Kidder, RN, Clinical Program Manager

# Overview

- Healthy Community Coalition (HCC)
- Meet the Community Health Worker (CHW) team!
- HCC's CHW Model
- Substance Use Navigation and the Role of CHWs
- HCC Patient Outcomes
- Questions

# Healthy Community Coalition

Through community building and the promotion of healthy behaviors, HCC works to improve the health and well-being of our families, neighbors, and the communities where we live and work.

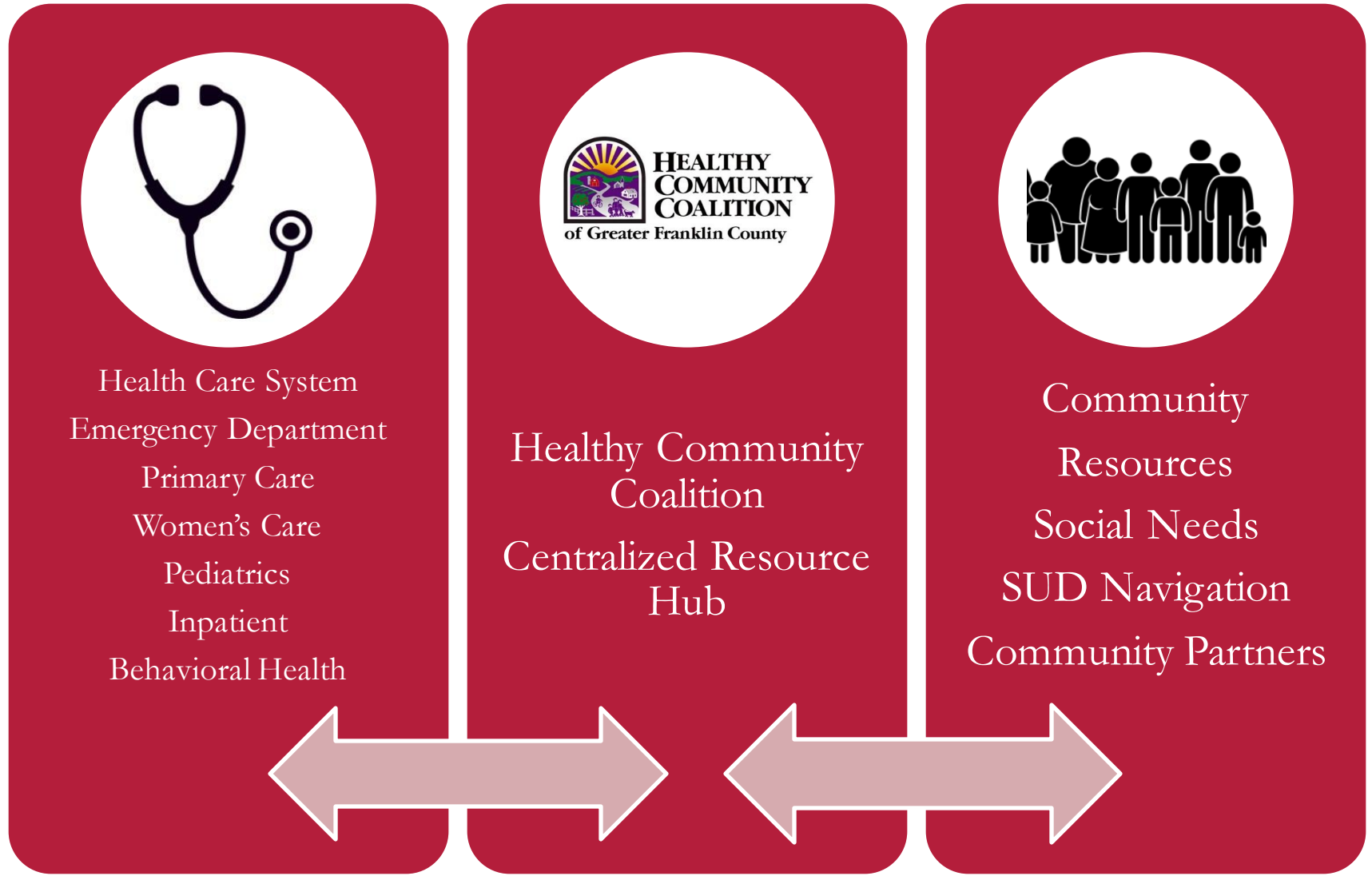


# HCC Community Health Workers

- Support individuals in increasing their personal capacity
- Meet patients where they are at in their health & wellness journey
- Act as a community connector
- Address social drivers of health
- Navigate the health care system



# Centralized Referral Hub





# HCC CHW Model

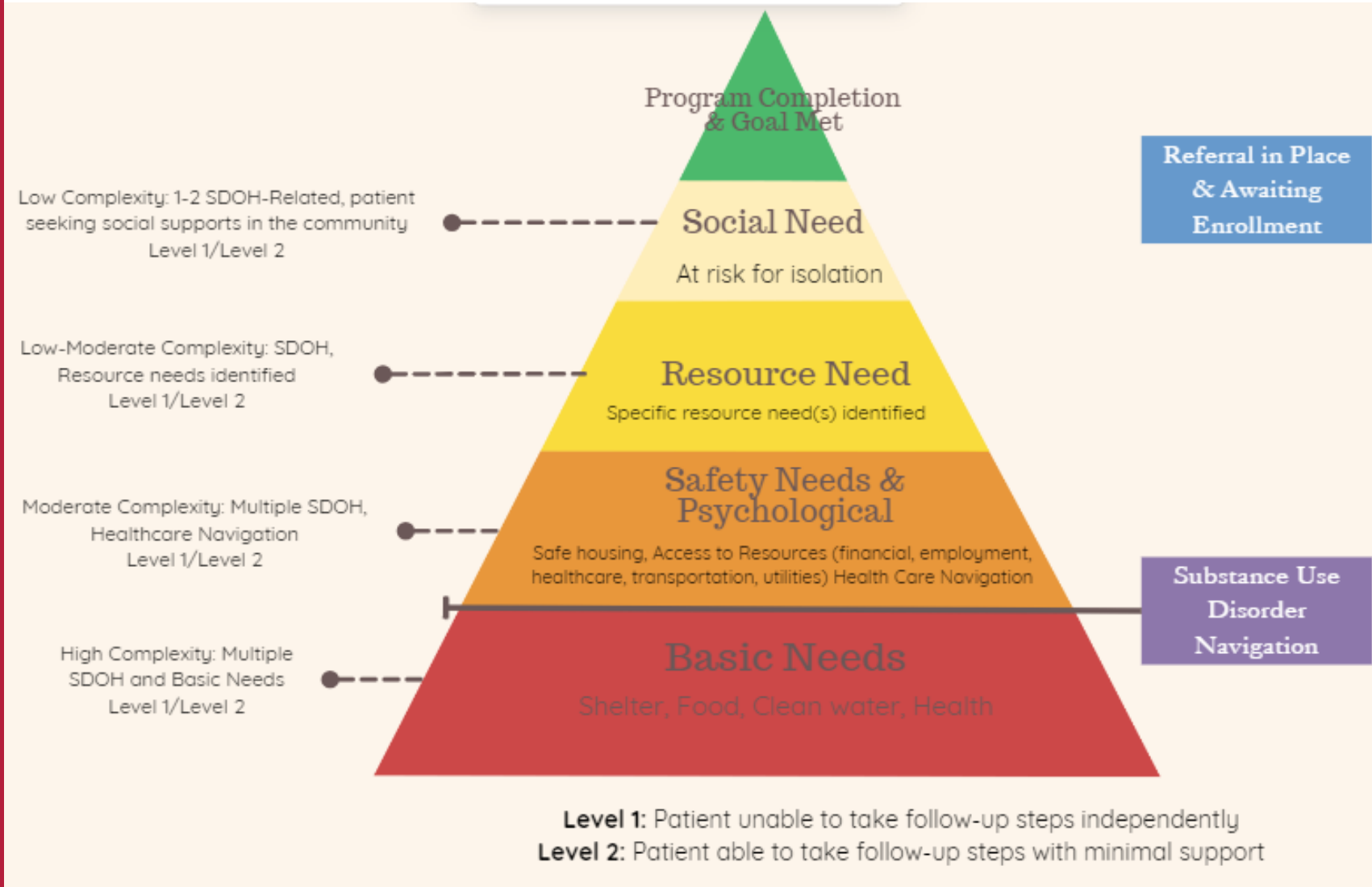
- Address social drivers of health
- Substance use navigation
- Support patients in meeting their health & wellness goals
- Closed loop referral process
- EPIC medical record documentation
- Patient Panels



- Utilize population health reports
- Address care gaps
- EPIC medical record documentation

- Mobile Health Clinic
- Tabling in the community
- Host resource fairs
- Connect community to health care system
- Build relationships with community organizations

# HCC Community Health Worker Panels



# SUD Navigator Role

- Expedited Integrated Medication Assisted Treatment (IMAT)
- Connection to recovery resources
- Address social drivers of health
- Neonatal abstinence syndrome program





# Substance Use Disorder Navigator Resources



## IMAT

- Access to expedited treatment
- ED induction follow-up
- Provider communication
- Electronic Health Record integration



## Resources for Recovery

- Recovery Center
- Behavioral health options
- Peer recovery coaches
- Options Liaison
- Recovery Orientated Mutual Self-Help Groups



## Harm Reduction

- Narcan (Naloxone) education & distribution
- Syringe service program
- Hep C home test
- HIV home test
- Fentanyl and Xylazine test strips
- Safer sex supplies

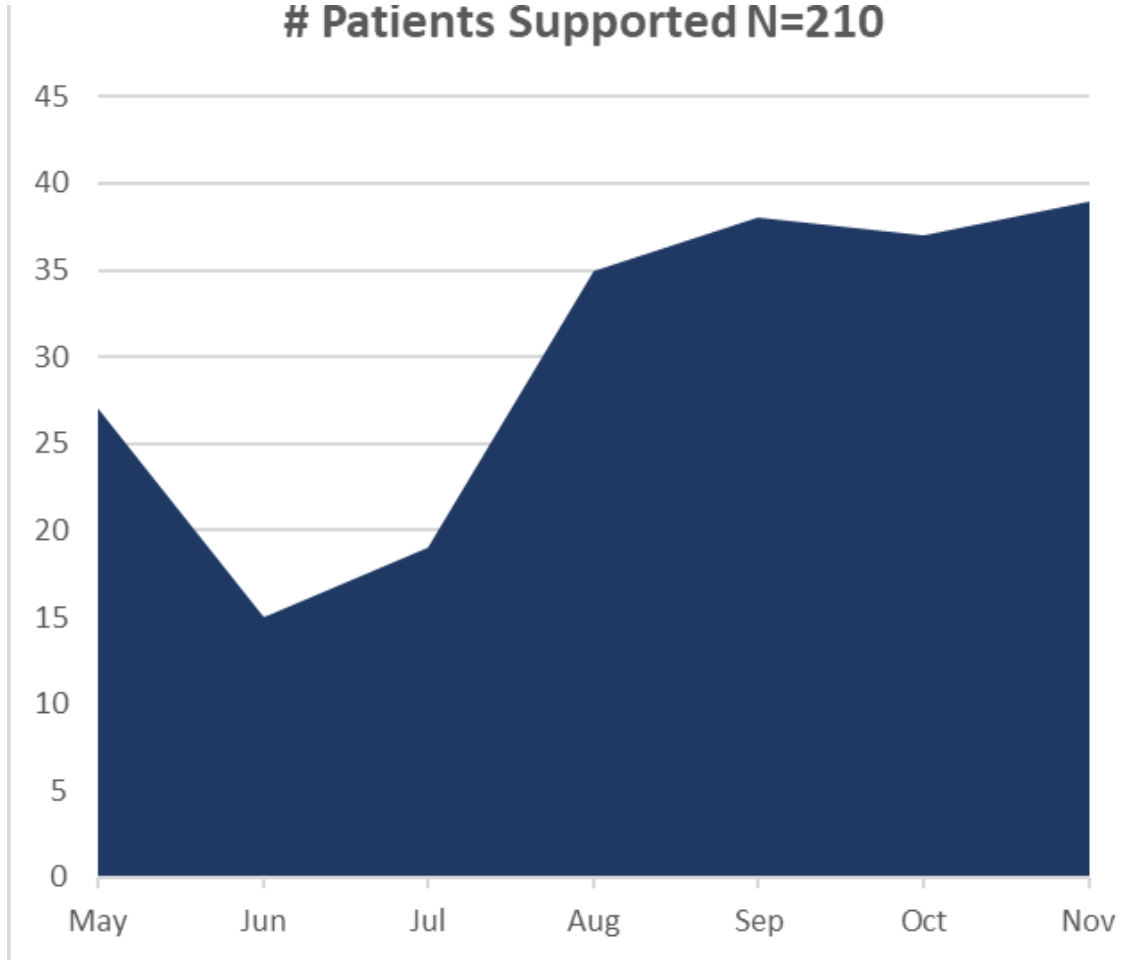


## NAS Program

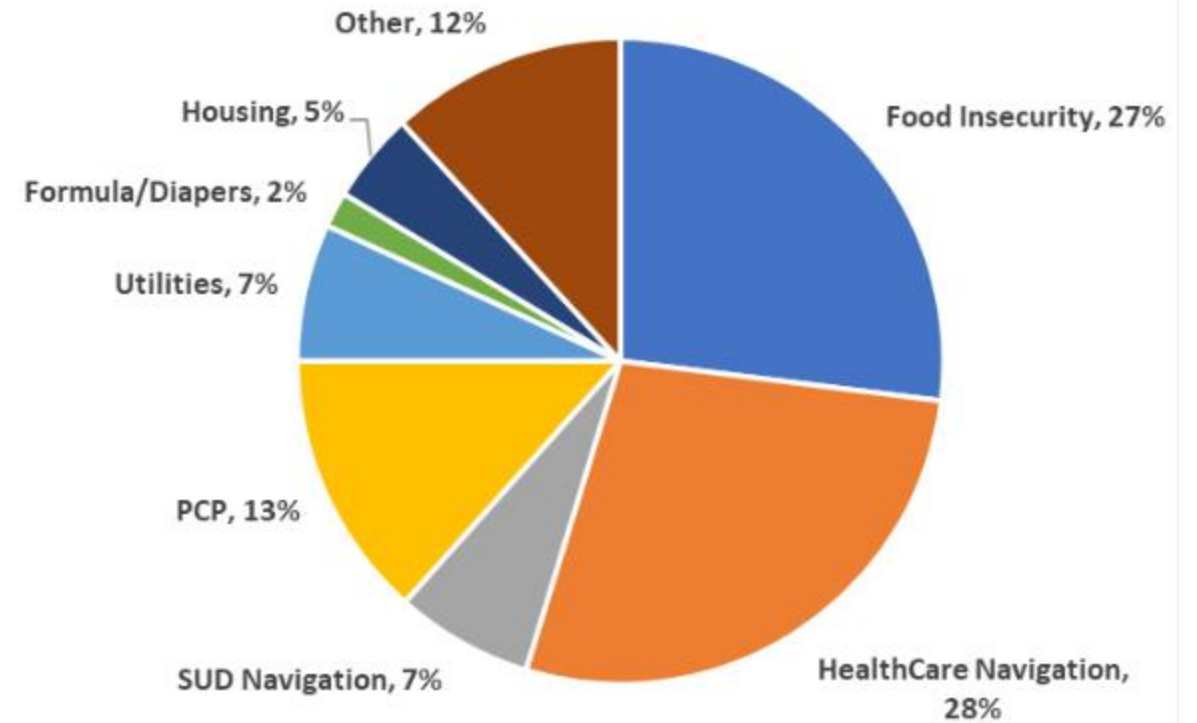
- Support for affected mothers for minimum of 1 year

# Referrals

# Patients Supported N=210



Identified Resource Needs\*

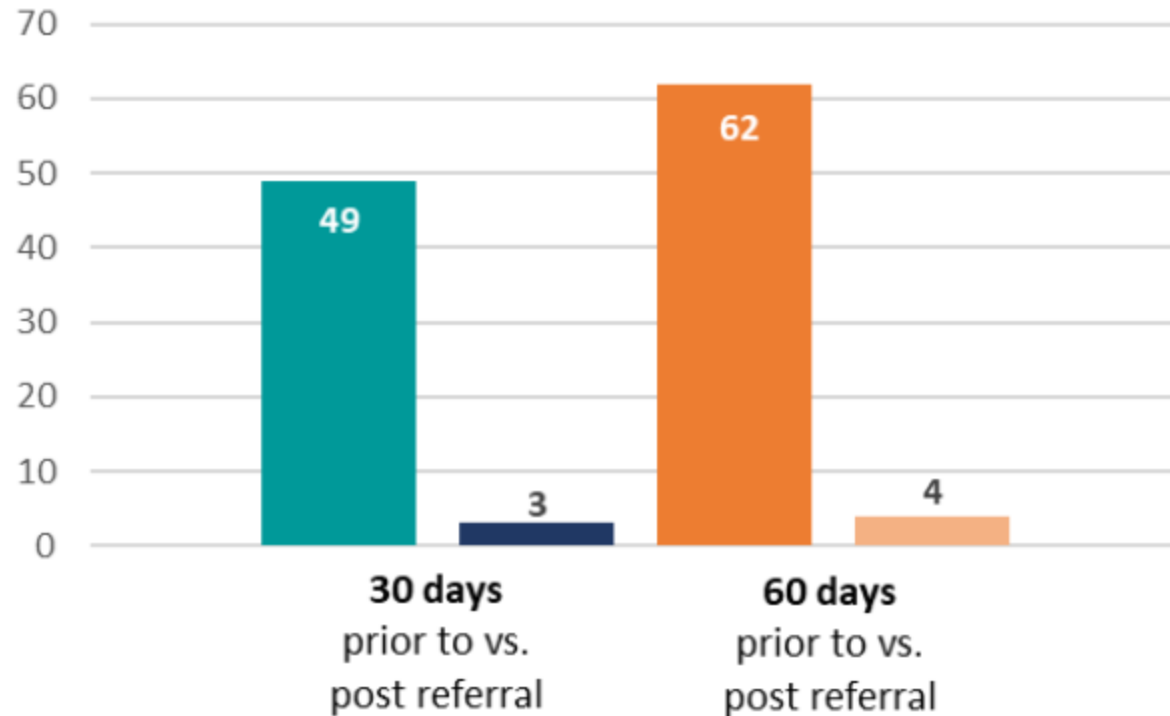


# Patient Outcomes

## Unplanned Hospital Admissions

N=210

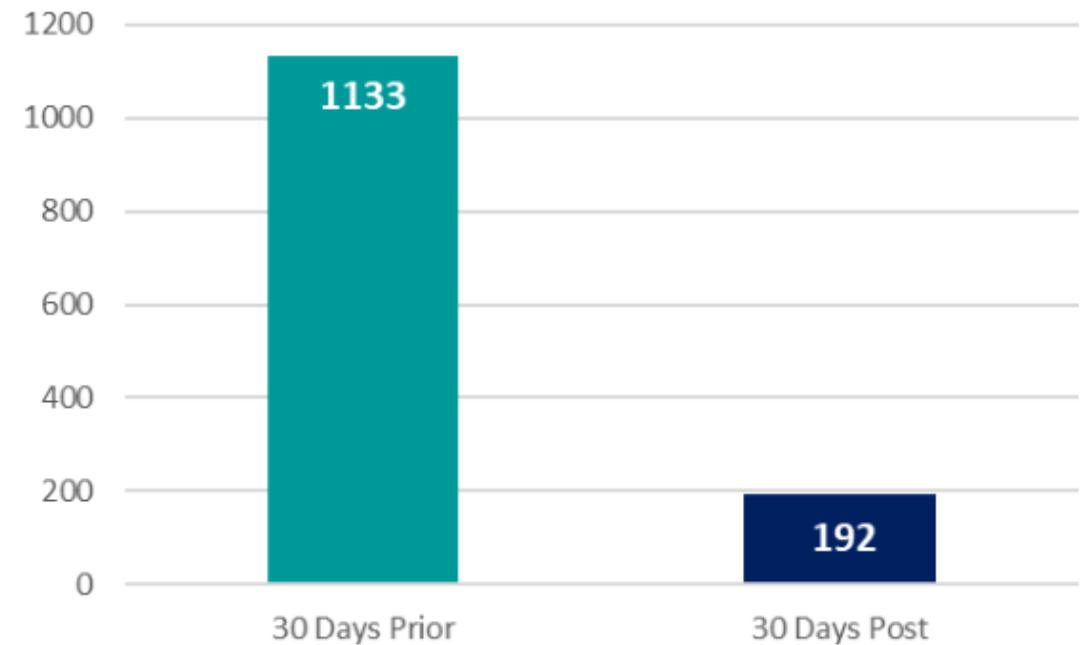
05/01/23 - 11/28/23



## Emergency Department Utilization

N=210

05/01/23 - 11/28/23



# Questions

